

Attachment B (8. Basis of Claim--continued)

Claim Report for the Caldor Fire:

This report provides information regarding the events leading up to the Caldor Fire and describes the events associated with fighting the Caldor Fire. *Please note that this claim report is being submitted without the benefit of formal discovery. The claimant reserves the right to amend or supplement their claim.*

- The community of Grizzly Flats worked diligently to protect themselves from wildfires within the confines of their community. Still, Grizzly Flats was at the mercy of the poorly maintained El Dorado National Forest and forest roads surrounding much of the community's privately held lands. The Grizzly Flats Fire Safe Council (GFFSC) began in 2006; over its history, nearly \$2 million in grant money was spent on fuel treatment (2006-2021). Fire Safe Council funding sources included community events to grant funding from State and Federal sources. The GFFSC is a semi-governmental agency with a board of directors and by-laws. It represents the citizens of Grizzly Flats regardless of home or property ownership.
- The United States Forest Service (USFS) often met with the GFFSC to plan for the potential of fires occurring in the El Dorado National Forest surrounding the community. Grizzly Flats was identified in the Federal Register as a Community at Risk and is the location of one of seven Healthy Forest Initiative Environmental Assessment Demonstration Projects in the United States.
- The USFS conducted a fire severity study in the Grizzly Flats area. This completed study was published in March 2017 and proposed several alternatives. The study concluded that the community of Grizzly Flats was at extreme risk from wildfires.
- The Trestle Forest Health Project - The Eldorado National Forest prepared an Environmental Impact Statement (EIS) for a proposal to modify vegetation on approximately 7,000 acres of National Forest System land. The project area was located southeast of the community of Grizzly Flats, including the area surrounding Leoni Meadows, west of Caldor, and north of Big Mountain.
- The USFS failed to protect the community of Grizzly Flats as it completed less than 15% of the Trestle Forest Health Project and failed to maintain the US Forest Service roads required to fight wildfires within the El Dorado National Forest surrounding Grizzly Flats. Between 2006-2021, **GFFSC completed 1559 acres of fuel treatment** with project costs of \$1,900,172, with an additional 1,368 acres planned. During the same period (2006-2021), **the USFS completed less than 1000 acres of fuel reduction.**
- The USFS initially failed to fight the Caldor Fire effectively by limiting firefighting resources available to fight the Caldor Fire, with the early release of some resources, a

lack of understanding of their USFS road infrastructure, a poorly defined command structure, and taking action without centralized communication or a cohesive strategy.

- The USFS was the Incident Command for the Caldor Fire but failed to promptly order evacuation advisories, warnings, and mandatory evacuations, which put the lives of Grizzly Flats residents at extreme risk. The USFS failed to keep the residents of Grizzly Flats aware of the Caldor Fire's intensity and growth and endangered people by not demanding an **Evacuation Advisory** at any point before the Caldor Fire destroyed over 400 homes in Grizzly Flats. **Evacuation Warnings** were only partially delivered via phone a couple of hours before the destruction of Grizzly Flats, with many residents left unaware of the approaching danger. Some residents were forced to flee only minutes before the Caldor Fire engulfed the community, with their only warning being the roaring sound of the approaching wildfire and the ash and smoke of the rapidly advancing flames. Many residents reported seeing fire personnel retreating from Grizzly Flats before any resident evacuations were issued. **Mandatory Evacuations** were not completed until after 400 homes were destroyed on August 17th. It remains unclear if the USFS ever issued evacuation warnings or mandatory evacuation orders or if other State and Local emergency services initiated them once the situation became undeniably dire.
- The USFS Incident Command failed to order structure protection in Grizzly Flats. Many residents reported no fire personnel in the community when they evacuated hours and, in some cases, minutes before the flames devoured over 400 homes. The lack of structure protection was the primary reason only a handful of structures survived within the burn zone. It remains unclear if the USFS issued any structure protection orders or if other State and Local emergency services initiated limited structure protection once the situation became undeniably dire. Only a tiny percentage of Grizzly Flats' homes survived in the Caldor Fire burn zone.
- Since the Caldor Fire destroyed much of Grizzly Flats, the USFS has demonstrated a remarkable lack of transparency by refusing to answer questions posed by residents, government representatives, and the media. The USFS has refused to meet with the community and has failed to respond to numerous FOIA requests. At the request of Congress, the USFS held a closed-door briefing regarding the Caldor fire but has not released the details of that meeting to the public. **See Attachment C.** One objective of this claim is to discover how the events surrounding the destruction of Grizzly Flats unfolded. The USFS has not provided a straightforward timeline or narrative of the circumstances surrounding the obliteration of Grizzly Flats.

History and background:

In 2002, the Grizzly Flats community residents came together to discuss living in the heart of a high-fire hazard area. To prevent or minimize catastrophic wildland fires in their community, they became organized with a collective focused effort. They designated a volunteer group of people, who in turn created the Grizzly Flats Fire Safe Council (GFFSC). The GFFSC was founded in 2006 and is under the guidance of the El Dorado County Fire Safe Council.

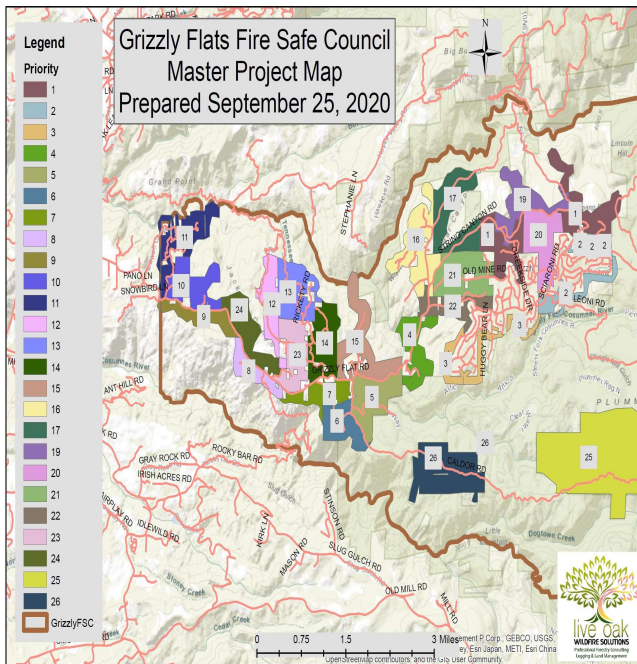
- The GFFSC secured nearly \$2 million in grant money for fuel treatment (2006-2021). The Grizzly Flats Fire Safe Council Funding Sources include holding community fundraising events and grant funding from State and Federal sources.
- Grizzly Flats was identified in the Federal Register as a Community at Risk and is the location of one of seven Healthy Forest Initiative Environmental Assessment Demonstration Projects in the United States.
- GFFSC is one of the top US Fire Safe Councils and has earned National recognition as a **Firewise Community**.
- GFFSC has a **Community Wildfire Protection Plan** and risk assessment updated annually.
- GFFSC Defensible Space Program – Approximately 625 advisory defensible space evaluations were performed on developed properties. Advisory evaluations mirror CALFIRE 4291 inspections but do not have enforcement actions. Additional evaluations were performed on 620 undeveloped parcels.
- Between 2006-2021, the GFFSC completed 1,559 acres of fuel treatment with project costs of \$1,900,172, with treatment of an additional 1,368 acres planned.
- GFFSC sponsored community cleanup days in coordination with Leoni Meadows and El Dorado Disposal removing tons of yard waste, green waste, and combustibles from the community.
- The GFFSC, in 2013, produced "A Grizzly Flat Community Awareness Manual," which was distributed to all property owners in Grizzly Flats.
- In 2013, the GFFSC created its first biennial, "Tabletop Exercise" of wildland fire. Each successive event has become more professional and challenging.

Grizzly Flats' Community Wildfire Protection Plan (CWPP)

(1) Collaboration: A CWPP must be collaboratively developed by local and state government representatives in consultation with federal agencies and other interested parties.

(2) Prioritized Fuel Reduction: A CWPP must identify and prioritize areas for hazardous fuel reduction treatments and recommend the types and methods of treatment that will protect one or more communities and essential infrastructure.

(3) Treatment of Structural Ignitability: A CWPP must recommend measures that homeowners and communities can take to reduce the ignitability of structures throughout the area addressed by the plan.



USFS Projects around Grizzly Flats:

- The Last Chance Fuel Reduction Project in 2006
The National project, located on National Forest lands adjacent to Grizzly Flats, was selected because of heavy fuel loading and topography. Past fire history indicated a high likelihood of a significant fire threatening Grizzly Flats.
- Last Chance Prescribed Burn--76 Acres were completed between 2014-2018.
- Henry's Prescribed Burn 2014--USFS Broadcast Burn 104 acres.
- Trestle Forest Health Project Approved 2017 (Study Complete 2014).
As of November 2021, 453 acres (2017-2021) were completed.
- Beetle Salvage 2017-2018--77 acres were completed.
- THE USFS completed a combined 710 acres of fuel treatment between 2014 and 2021.
(Actual acres differ due to accounting methods)*

Trestle Forest Health Project (Details):

- The Eldorado National Forest prepared an Environmental Impact Statement (EIS) in 2014 for a proposal to modify vegetation on approximately 7,000 acres of National Forest System land.
- The project area is located southeast of the community of Grizzly Flat, including the area surrounding Leoni Meadows, west of Caldor, and north of Big Mountain.

FUELS AND FIRE ANALYSIS TRESTLE FOREST HEALTH PROJECT

Two alternatives were considered:

- *"Alternative 2 would be the most effective at reducing fuel loading on the greatest area of the Trestle project therefore reducing the likelihood of high severity fire across the landscape and adjacent to the community of Grizzly Flat. Fuel reduction treatments would be connected to each other and to treatments from previous projects. Connected mechanical fuel treatments on ridge-tops provide excellent locations from which to fight a wildland fire and for implementation of prescribed burns. Fuel treatments mid-slope and lower slope positions help to reduce the rate of fire spread and flame lengths before the Fire reaches the ridge tops allowing fire fighters more time to plan and implement suppression strategies."*
 - Use a combination of ground-based and skyline logging systems to conduct mechanical thinning on approximately 4,887 acres (4,444 acres within natural stands and 443 acres within plantations).
 - Hand cut and pile understory vegetation (trees less than 9 inches dbh and brush) on approximately 1,492 acres.
 - Prescribed fire is proposed on 15,812 acres within the project area.
- *"Alternative 5 is also effective at changing the threat and severity of a wildland fire on the landscape. However, under Alternative 5, fewer acres would be treated therefore the effectiveness is less than that of Alternative 2. Some mechanical fuel treatments are not connected to past treatments while others are located mid-slope. More time would be required to prepare ridge-tops and roads to contain or hold a fire during either a wildland fire scenario or prescribed burning."*
 - "When compared to the proposed action, Alternative 2, this alternative would **commercially thin 1,149 fewer acres** within natural stands and 13 additional acres in plantation stands; reduce hand thinning by 380 acres; increase prescribed burning as an initial treatment on 1,519 acres, while reducing prescribed fire as a priority initial treatment on 14 acres; reduce prescribed fire as a follow-up treatment on 701 acres; increase non-commercial mechanical roadside thinning by 2 acres."
 - Conduct mechanical thinning of 3,726 acres.
 - Hand-thin and pile on approximately 1,112 acres
 - Conduct the cutting of small trees on approximately 1,190 acres.

The USFS chose Alternative 5 despite opposition from GFFSC. The purpose of the project is to modify the forest vegetation to put it on a trajectory toward the desired conditions for:

(1) Reduced tree density; (2) sustained old forest conditions; (3) enhanced wildlife habitat; (4) reduced wildfire risk; (5) improved long-term scenic sustainability; (6) increased recreational opportunities; (7) enhanced riparian conservation areas; and, (8)

maximized revenue derived from commercial products to perform essential and costly biomass removal, and to support the retention of local industrial infrastructure.

As of November 2021, a total of 453 acres (2017-2021) were completed with a combination of thinning, broadcast burning, and pile burning

Key Takeaways Pre Caldor Fire Preparations:

- The USFS approved "Alternative 5" of the **Trestle Forest Health Project** despite the community and private forest requests for "Alternative 2" (Trestle Forest Health Project Appendix D - Final Environmental Impact Statement Response to Comments)
- The USFS and GFFSC **agreed** that the Trestle Forest Health Project work would be completed by 2021. However, less than 15% of the project was completed before the Caldor Fire started on August 14th, 2021.
- GFFSC Defensible Space Program – Approximately 625 defensible space evaluations were performed on developed properties, meaning that almost all homes in Grizzly Flats were inspected. Defensible space evaluations mirror CALFIRE 4291 inspections. Additional evaluations were performed on 620 undeveloped parcels.
- Between 2006-2021, **GFFSC completed 1,559 acres of fuel treatment** at a cost of \$1,900,172, with an additional 1,368 acres planned.
- During the same period (2006-2021), the **USFS completed less than 1,000 acres of fuel reduction** when Alternative 5 had over 6,000 acres of thinning alone planned.

Key Takeaways USFS Caldor Fire Response:

(See attached Addendum for the Timeline of Caldor Incident Response communications)

- 08/14/2021 @ 18:54, the CALFIRE Emergency Command Center in Camino received the fire report. Fire engines, crews, aircraft, and bulldozers were sent to the location. The first arriving aircraft completed two retardant drops and gave the GPS location of the Caldor Fire. The weather conditions were hot and dry with little air movement and smokey conditions due to the Dixie Fire currently burning. The initial photos of fire behavior show a single tree burning next to the river on flat ground. A common place name for access was given to the ground units responding. (Berries Crossing on the South Side of the Middle Fork Consumnes River)
- Yet to be explained by the USFS is why the responding engine and crews were not familiar with the location. The USFS has claimed it did project work for nearly 20 years (Trestle) in the very area identified by the GFFSC and USFS as a high-fire severity area. Yet when the Caldor Fire occurs, the USFS crews and command staff are unable to access the location due to downed trees, washed-out roads, and no current maps of the area. The private timber company SPI had to guide some of the crews into the National Forest roads. (Audio Files)

- 08/14/2021 @ 21:34 The local fire chief makes it to the Caldor Fire and states it's 2 acres. (2 hours and 40 minutes have elapsed)
- **08/14/2021 @ 22:29 The Fire is now 3-5 acres, and USFS is in control of all ordering resources.**
- **8/14/2021 USFS Incident Command (IC) releases several local government fire engines (Audio Files)**
- 8/14/2021 USFS Engines 366 and 365 returned to their home stations and later recalled back to the incident (Audio Files)
- 8/15/2021 @ 00:48 Incident command on the radio states the Caldor Fire will be a significant event (Audio Files)
- 8/15/2021 @ 00:59 USFS Incident command is informed of a second, more substantial fire well away from the main Caldor Fire. The incident command doesn't see how the Caldor Fire could have spotted so far from the main Caldor Fire and decides to let the fires burn together due to a lack of resources. (Audio Files)
- **8/15/2021 @ 11:34 USFS releases CALFIRE engines, hand crews, and dozer from the incident (Audio Files)**
- **8/15/2021 USFS Incident Command team completed ICS 209. This document outlines suppression needs and potential for fire growth; it's then used for priority resource ordering. The USFS Incident Command team knows the Caldor Fire will impact Grizzly Flats within 72 hours. Yet, no fire resources are sent to the community for structure protection, and no evacuation advisories are issued.**
- 8/16/2021 The USFS Incident Command team utilized the Wildland Fire Decision Support System (WFDSS) that shows where the Caldor Fire will impact under current conditions; Grizzly Flats is in the target area shown. **Despite the Trestle Fuel and Fire Behavior Study, the WFDSS, evacuation plans, and local knowledge of the fire threat, NO resources are dispatched for structure protection in Grizzly Flats until midnight of the 16th / early morning on the 17th. This gave the responding resources no time to prepare the community for the firefront. (Audio Files)**
- **8/17/21 By early morning on the 17th, the fire conditions in Grizzly Flats were so dangerous that a frontal assault on the Caldor Fire would be impossible. Over 400 homes were destroyed, and many residents who did not receive evacuation orders fled the community only minutes before the flames consumed most of the community.**

Conclusions:

- The USFS Incident Command should have ordered structure protection resources within the first days (based on their fire behavior analysis showing the potential for significant fire growth) and issued evacuation advisories for Grizzly Flats. Evacuations only occurred after conditions deteriorated, and it became so apparent that the evacuations could no longer wait.
- The USFS Incident Command should not have let any resources be released during the initial attack and should have ordered the closest resources immediately needed to the initial attack of the Caldor Fire.
- The USFS wanted only USFS equipment and went to a national ordering system to try and get those resources from its agency. When that failed, they returned to CALFIRE and Local Government departments for help, but it was too late.
- Several reports of USFS conducting "Firing Operations" without sufficient holding resources contributed to excessive fire spread. Burn patterns around Leoni Meadows indicate firefighters intentionally set these fires without any established plan.
- The USFS failed to maintain vegetation overgrowth near populated areas exhibiting mixed dead and live brush/trees at critically dry moisture levels. The USFS failed to maintain its forest roads during critical fire conditions and with no recent fire history in the origin area leading to increased fuel loading. Limited firefighting resources are available – early release of some resources, poorly defined command structure, and freelancing without a cohesive strategy. USFS Incident Command staff was overconfident and failed to use information from other sources. An example is the CHP helicopter with a FLIR camera reporting the Caldor Fire of 30-40 acres, and a few minutes later, the IC reporting the Caldor Fire of 6-8 acres. During the same period, the local Fire Chief reported forward progress of the Caldor Fire had stopped.
- Grizzly Flats Fire Safe Council and Grizzly Flats Community took great care in understanding the risks of living in the wildland-urban interface. Unfortunately, sizeable running timber fires will burn until fuel, weather, or topography changes the fire conditions.
- Money spent on suppression is nearly 261 million dollars. That figure does not calculate the environmental damage to the forest and watershed. The loss suffered by the citizens is of such enormous value that it is difficult to calculate.

Addendum: Timeline of Caldor Incident Response

The timeline was compiled from emergency communications and public postings.

August 14th, 2021:

- *08/14/2021 @ 18:54 the CALFIRE Emergency Command Center in Camino received a fire report. 8 Engines – 2 Handcrews – 4 Aircraft – CALFIRE Dozer & Multiple Chief Officers from USFS, Pioneer Fire District and CALFIRE*
- *08/14/2021 @ 19:22 Pioneer Chief 8600 unable to locate Fire*
- *08/14/2021 @ 19:28 PER AA 503 MADE CONTACT WITH 8600 AND 5PT*
- *08/14/2021 @ 19:33 PER IC- AA HAS FOUND FIRE . STAGING WILL BE AT NOR SO / LEONI*
- *08/14/2021 @ 19:41 DRAINAGE OF DOG TOWN 2 TANKER DROPS AHEAD. 38 35.07 120 32.16*
- *08/14/2021 @ 19:49 BEST ACCESS-OMO RANCH TO LITTLE MT RD*
- *08/14/2021 8N55 is near the PIPI Valley campground. The Fire is close the Barry's Crossing on the Cosumnes River. Firefighters are having trouble getting there. Locked fences, tough logging roads*
- *08/14/2021 @ 20:03 Pioneer Chief 8600 – Air attack has 3 drops, forward fire progress stopped*
- *08/14/2021 @ 20:12 PER AA (Air Attack) NOW AT 2 ACRES*
- *08/14/2021 @ 20:13 Pioneer Fire 8600 WOULD LIKE TO ORDER 2 MORE HAND CREWS*
- *08/14/2021 USFS Batt Chief 61 is IC – (Time Unknown)*
- *08/14/2021 @ 20:21 – 21:29 Type 3 IC FOR TOMORROW. Air Attack released. 4 Cover engines for tomorrow. PER Battalion 61 - REQ Engine 366, Sierra Pacific Industries 15 en route tomorrow to assist. Water tender 6540 @ roads 8n55/8n67*
- *08/14/2021 22:23 ***** HUSBAND ON SCENE, SENT SCREENSHOT OF LOCATION. CALLED IT BERRIES CROSSING.*
- *08/14/2021 @ 21:34 C8600, ON EL DORADO COMMAND-FOUND FIRE ON THAT ROAD -2 AC TORCHING - TREES BLOCKING ACCESS WILL NEED DOZER*
- *08/14/2021 @ 21:45 - 2 to 3 acres crowning in a draw*
- *08/14/2021 @ 22:29 – "3 TO 5 ACRES SUGNIFIGANT SLOP LOTS OF TORCHING HEAVY DEAD AND DOWN . CREWS 8N55 IS BEST ACCESS. STILL TRYING TO MAKE ACCESS. MIGHT HAVE TO EVACUATE CAMPERS BY TOMORROW OR SOONER. IF WE CAN'T GET BOOTS ON THE GROUND TONIGHT"*
- *08/14/2021 @ 22:35 to 22:55 "EDSO Has 4 UNITS RESPONDING CODE EDSO PUSHING FOR A LOCATION TO TIE IN. GAVE THEM8N55/8N55C AS POTENTIAL MEETING PLACE - CAMINO NEEDS TO PASS EDSO MEETING PLACE TO D3F AND IC"*

August 15th, 2021:

- 08/15/2021 @ 0:04 to 1:07 "edso HAD CHP H24- DO AN ARIEL EVACUATION NOTICE" "PER CHP 24. TAKING VIDEO ..MOD ROS WITH CROWNING" 0:13 "30 TO 40 ACRES SO SW HEAVY FUEL CROWNING TORCHING. NEAREST STRUCTURE 1 MILE AWAY" PER IC @ 0:25- "6 TO 8 ACRES with 2 Divisions"
- 08/15/2021 @ 0:40 CREWS ARE MAKING ACCESS ON A 2ND FIRE - 2ND FIRE 38.583611, 120.54 3333 - CALFIRE B2711 IS DIV MIKE.
- 08/15/2021 @ 0:50 WITH THIS BAD ACCESS TO FIRE. IT HAS THE POTENTIAL TO GO BIG. SOME RESOURCES ARE WORKING DOWN FROM THE TOP.
- 08/15/2021 @ 1:07 CHP & EDSO CLEAR
- 08/15/2021 It has been reported by CALFIRE personnel that they were released from the incident by USFS despite no containment of the Fire
- 08/15/2021 @ 1:43 "per d3f - will be pulling everyone off the line for accountability."
- 08/15/2021 @ 4:09 "IR FLIGHT HAS BEEN ORDERED. IC IS REQ -2 DOZ ANY TYPE..4 DIVS.. 4 TFLD TRANNIE ACCEPTABLE. 2 EXTRA TAC FREQS. CAL FIRE IS GOING TO COMMIT THEIR DOZER TO THE INCIDENT. INDIAN DIGGINS SCHOOL 6020 OMO RANCH RD= NEW ICP"
- 08/15/2021 @ 7:24 PER TODD CRAWFORD, ONE EVAC ORDER IN PLACE 1.5 MILES FROM THE FIRE WHICH DOES NOT INCLUDE OMO RANCH. DOWNTOWN OMO RANCH AND LEONI MDWS WILL BE PUT INTO A EVAC WARNING @0800.
- TIME GAP
- 08/15/2021 @ 15:27 USFS Chief 1 DIP SITE? PER C1F IF WE NEED TO USE A PUBLIC DIPSITE WE NEED TO FILL OUT A 213 AND A LAND USE AGREEMENT, SEE IF THEY CAN USE ONE ON FOREST FIRST. ADVISED AA "Dip site refers to areas where helicopters get water.
- 08/15/2021 The Caldor Fire map uploaded to the national site is the incorrect map
- 08/15/2021 Mapped by inferred at 262 acres

August 16th, 2021:

- 08/16/2021 Limited use of aircraft due to visibility
- 08/16/2021 @ 6:16 to 11:32 - PER CALDOR NIGHT OPS, UPDATE- NEW ACREAGE UNKNOWN, QUITE A BIT OF GROWTH, FIRE ACT W/IN DRAINAGE AND UPSLOPE HAS PICKED UP SINCE 0500; PER CALDOR OPS, EDSO WILL BE CONDUCTING UAF NAVIGATION W/IN THE TFR - WILL INFORM CAMINO WHEN THEY'RE ON THE GROUND/FINISHED; edso completed uas missions for the day. updates on the aircraft? 3 ships should be ready about 8am. hold heavies. when avail will launch the medium to see what we have this morning. 5PT UNABLE TO COMPLETE MISSION DUE TO VISIBILITY ON THE PAD SHUT DOWN AT PACIFIC COPY DIRECT: HARD CLOSURE ON ELKINS FLAT AND PIPI CAMPGROUND. ALSO THE REST OF THE GOLD NOTE AREA; OPS, PLACE A CALL, AIRCRAFT NEEDS? PLEASE REQUEST AN AIR ATTACK FOR 1300 OVER THE FIRE AND A COBRA
- 08/16/2021 El Dorado National Forest reports 300 acres

- 08/16/2021 @ 14:45 OPS: "FIRE PICKING UP SIGNIFICANTLY STARTING AT THE TOP ON A WORKING WAY DOWN DOGTWN CRK MODERATE FIRE BEHAVIOR. PUTTING BUCKETS ON IT. BIG MTN RIDGE DOWN 8N58D AREA. COMPLETING STRUCTURE ASSESSMENT ON BIG MTN. STARTING DIRECT AND INDIRECT AS WELL AS SAFETY ZONES & LANDING ZONES. DIV M WORKING SPOT NEAR ALPHA SPUR. LINES BURNED OVER WORKING WITH ROTOR. WORKING ON GOLD NOTE RIDGE. & LINE TURNING NORTH ON 8N57B. WILL GET MESH IN TO PLANNING RE NEEDS. FIRE ON BOTH SIDES OF BIG MTN RIDGE. STILL SOUTH OF DOGTOWN CREEK. CAMP AT PLACERVILLE FAIRGROUNDS. 1900 NIGHT OPS BRIEFING AT INDIAN DIGGINGS SCHOOL FOR NIGHT RESOURCES"
- 08/16/2021 The Sacramento Regional Incident Management Team was in briefing this morning; there will be no Incident Action Plan posted until the team has taken the Fire
- 08/16/2021 @ 18:47 From radio traffic "Sounded like the local gov Chief inserted himself with a few volunteer engines (not assigned to the incident) at Leoni Meadows and had told Ops there was a spot fire in there. Ops wanted to confirm that was accurate before making a determination. That was about 45 min ago. Nothing more about a spot fire at Leoni or from local gov units"
- From report to dispatch: "SPOTTED ACROSS DOGTOWN CREEK. 2 ROTORS ON IT NOW. ABOUT 1/4 ACRE. WILL HAVE DIV A TRY TO ACCESS IT, 9N60 TO ACCESS IT OFF LEONI PROPERTY PER

August 17th, 2021:

- 08/17/2021 @ 2:02 – 2:10 "PER OPS FIRE HAS REACHED GRIZZLY STARTING EVACS HAPPY VALLEY LOSING STRUCTERS IS GRIZZLY FLAT (DIRECT) LOST SEVERAL HOUSES ON EAST SIDE OF GRIZZLY FLAT. (FROM CAL FIRE SCHMIDT) SPOT FIRES ALL OVER. TOO DANGEROUS. PULLING OUT RESOURCES"
- 08/17/21 @ 2:12 - 3:01 "##### HUMBUG RD- TWO RESIDENTS UNABLE TO ESCAPE NO TRANSPORTATION AND EDSO CANT MAKE ACCESS DUE TO FIRE ACTIVITY, B2711 TO CHECK ##### HUMBUG RD, PER EDSO OFFICER CONTACT DISP FOR PHONE NUMBER TO ##### HUMBUG ###-###-#####, PER VICKERS NOT ABLE TO ACCESS ADDRESS, CALL RESIDENCE TO ADV AND SEE IF THERE IS ANOTHER ENTRY LOCATION//NO ANSWER AT RES PHONE//RESIDENT ADVD OUT, HUMBUG RESIDENT MADE IT TO WOODRIDGE DR AND IS SAFE"
- 08/17/21 @ 10:01 "E814 ONS MALE 30 % 2ND 3RD BURN CODE 3 TYLER/SPRING AT POST OFFICE EMD ACCESSING, E814 IS GOING TO TRY TOP MOVE HIM AND WILL ADVISE LOCATION
- 08/17/21 CALFIRE Team 6 on order
- 08/17/21 Mandatory Evacuation in Grizzly Flat and surrounding community
- 08/17/21 Fire is at 60,000 acres per CALFIRE Twitter feed